



Blue Voice Computer & Cruiser Install

Support for Chrome and Edge

Table of Contents

Title:	Page:
Logging in on Edge	4
Install Page as App on Edge	5
Save Favorite on Edge	9
Logging in on Chrome	12
Install Page as App on Chrome	13
Add Bookmark on Chrome	14
Troubleshooting	15



Edge

Logging In

1. For cruisers or department-wide desktop computers, it's best to create a new general account rather than logging into your personal one. Use the admin panel to create one or email amit@bluevoice.io for assistance.

Examples:

- a. cruiser1@department.gov
- b. staffcomputer@department.gov

2. The initial password will always be your department name followed by "123!".

Examples:

- a. Brookline123!
- b. Cambridge123!

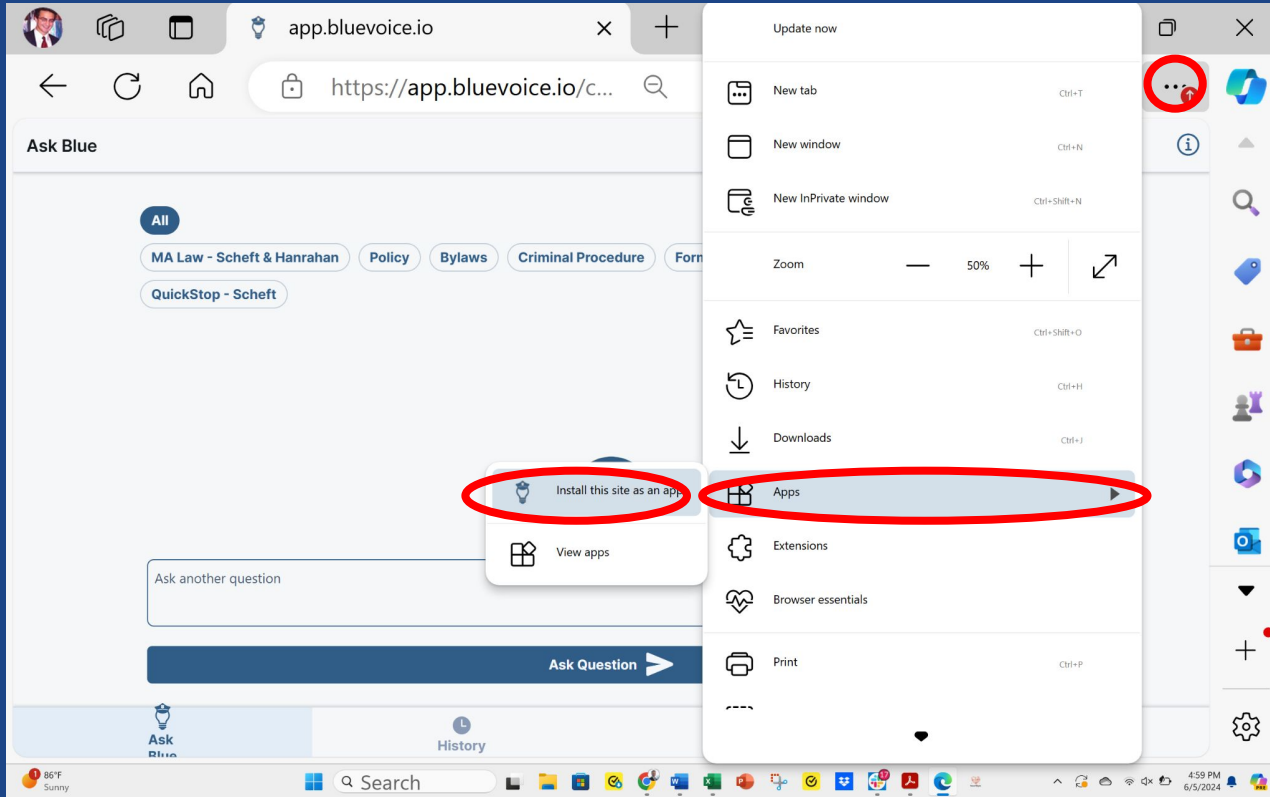
Email
Email@.com
Use your department work email

Password
Password Field

[Forgot your password? Click Here.](#)

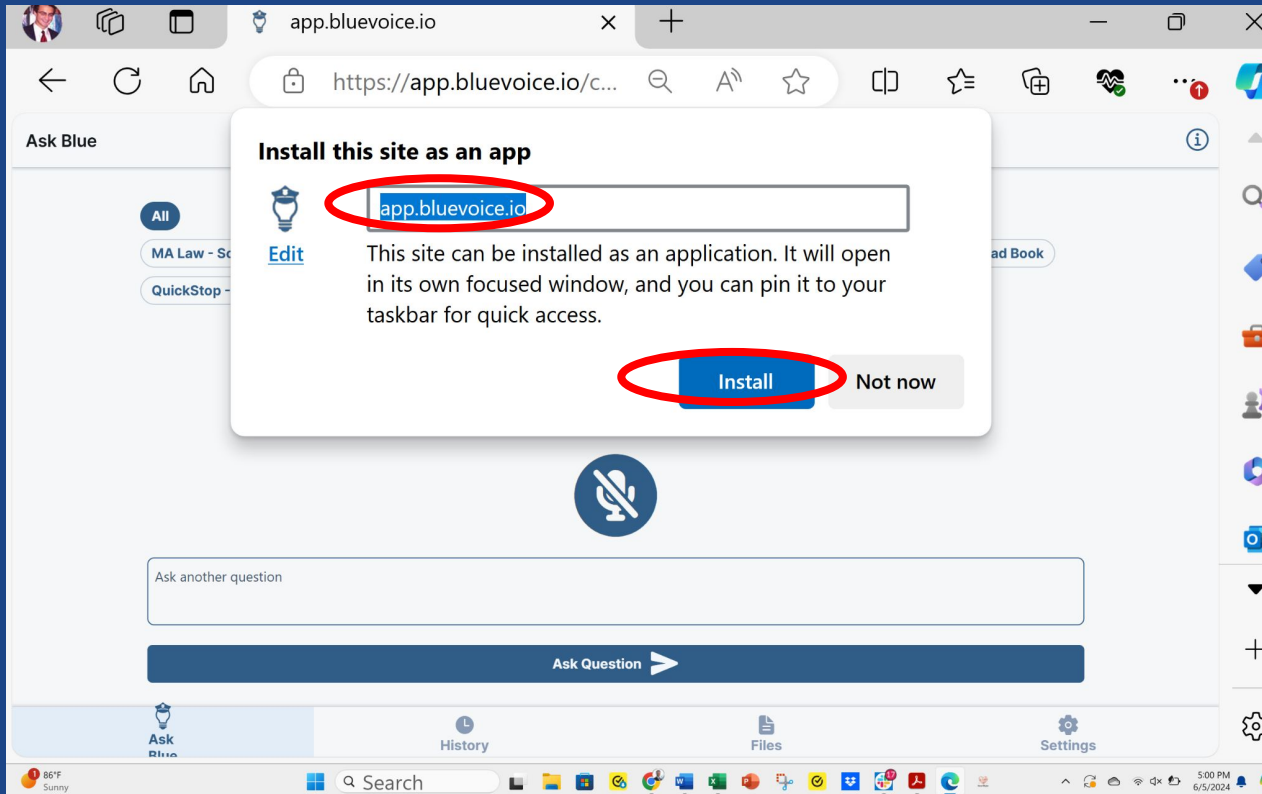
Start Bluevoice >

Install Page as App (1/4)

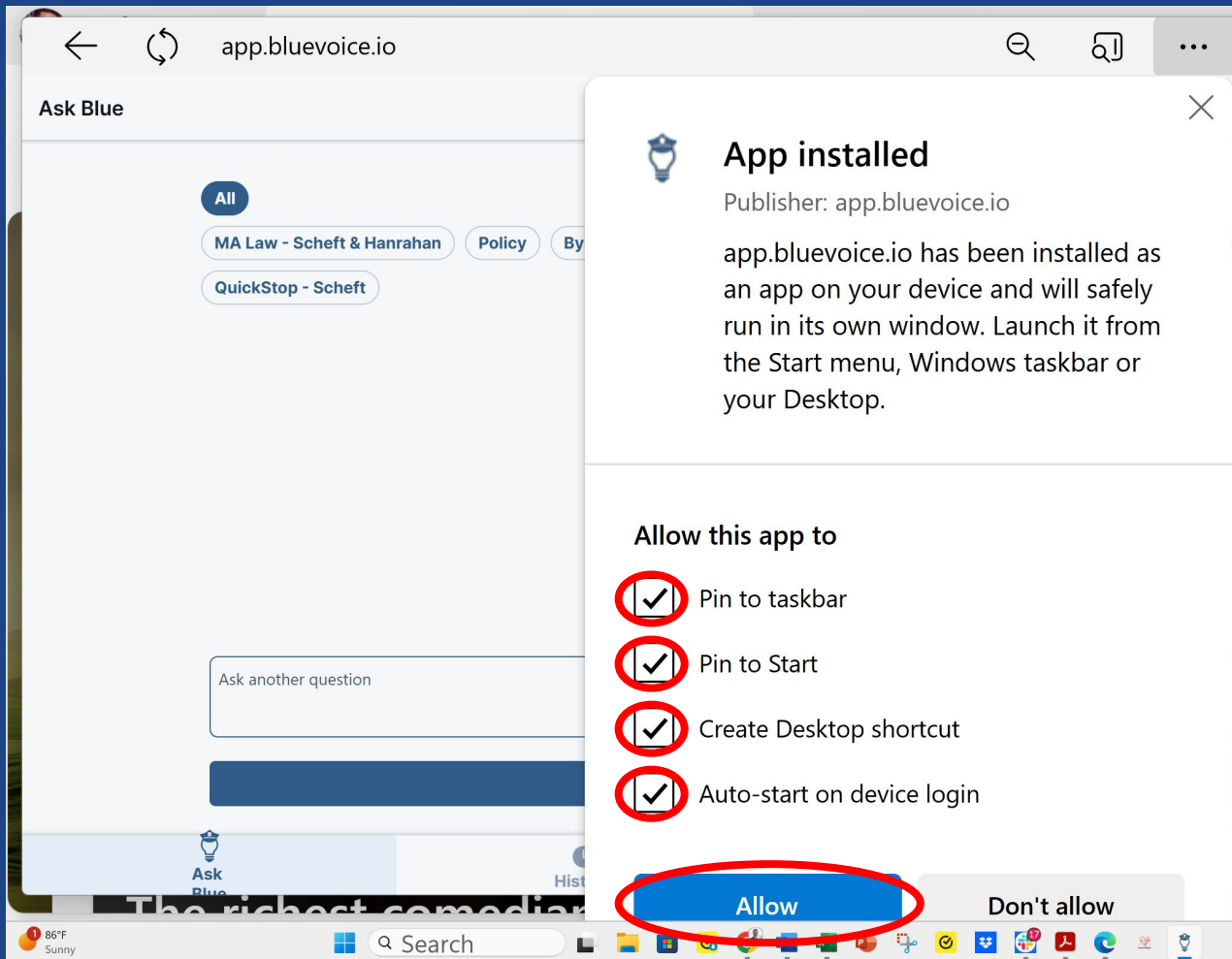


1. Navigate to app.bluevoice.io and log in.
2. Tap 3 dots in upper right hand corner.
3. Select “Apps” and install this site as an app.

Install Page as App (2/4)



1. Replace “app.bluevoice.io” with “Blue Voice”.
2. Click “Install.”

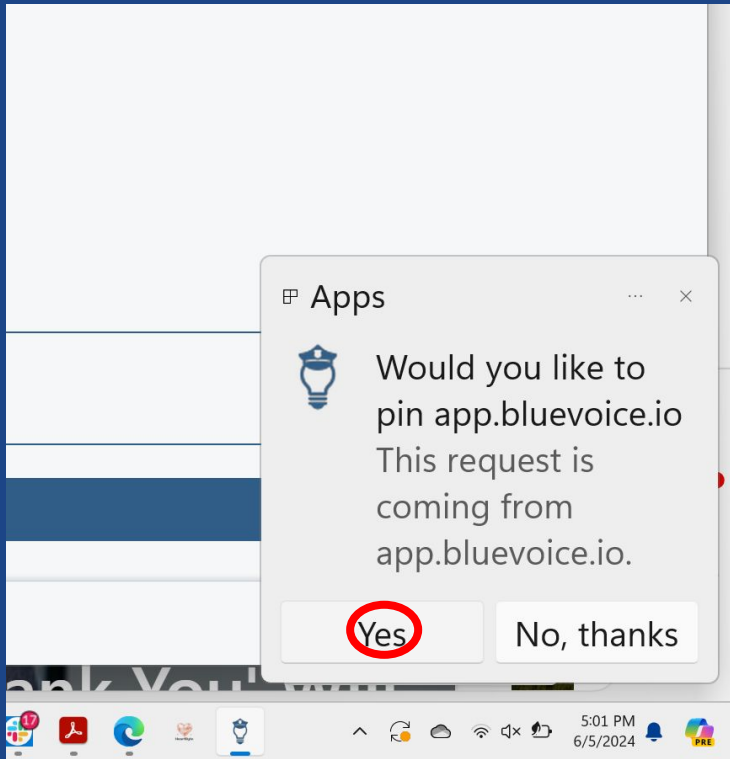


Install Page as App (3/4)

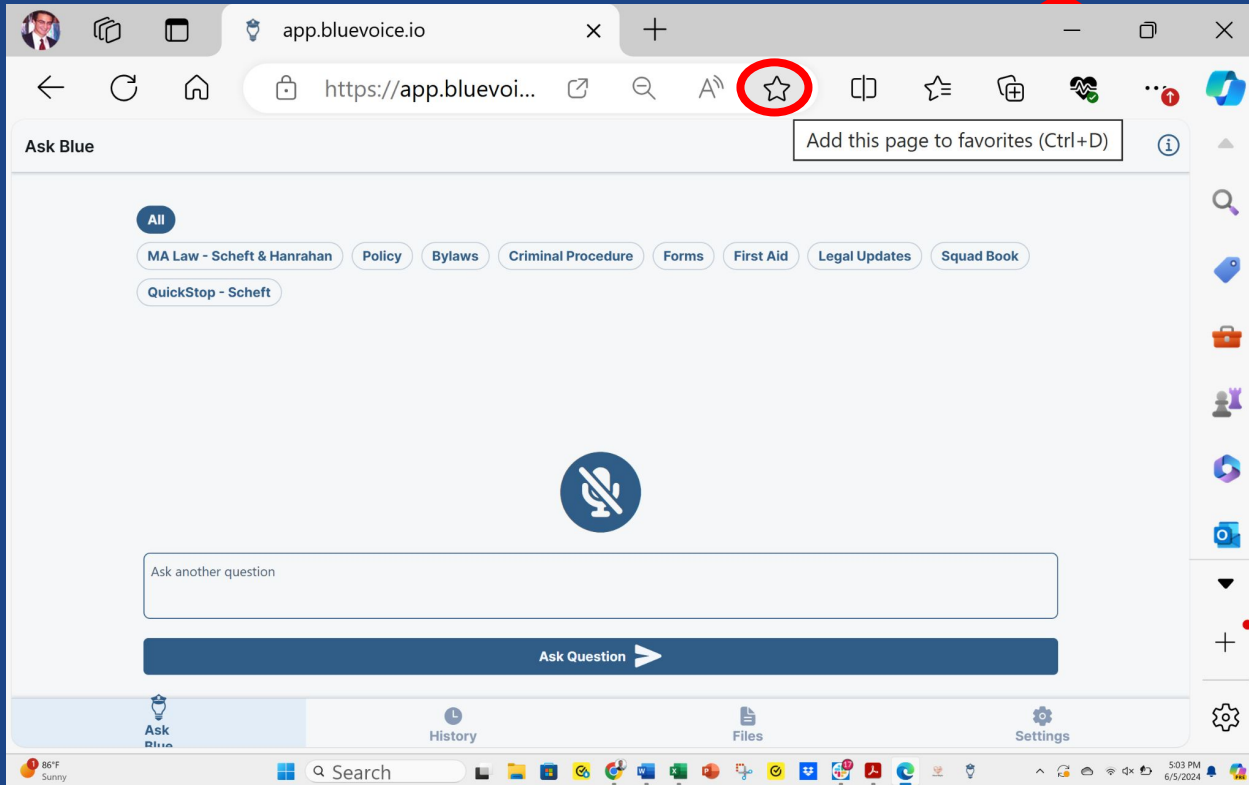
1. Check the box for “Pin to taskbar”, “Pin to start”, and “Create desktop shortcut”, and “Autostart on device login.”
2. Click “Allow”.

Install Page as App (4/4)

1. Pin the app to the taskbar by clicking “Yes” on this popup.



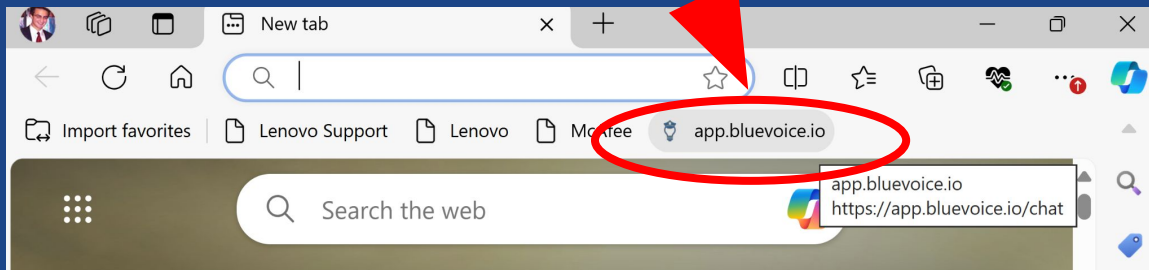
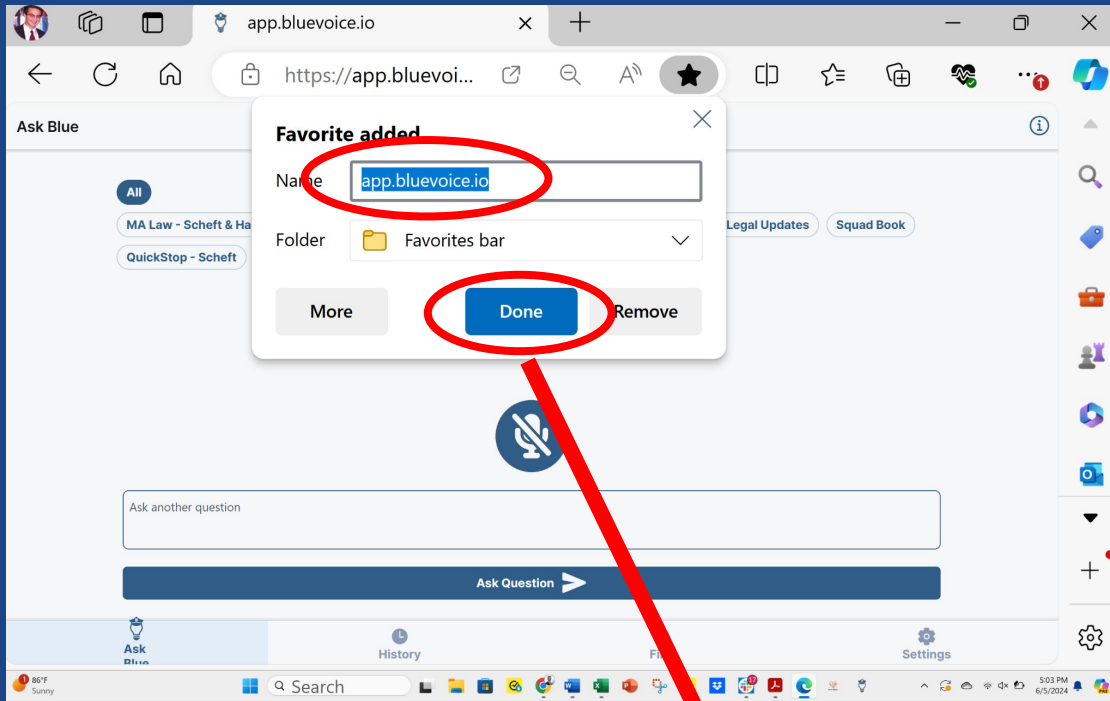
Save as Favorite (1/2)



1. Navigate to app.bluevoice.io and log in.
2. Tap the star icon that says “Add this page to favorites”.

Save as Favorite (2/2)

1. Replace “app.bluevoice.io” with “Blue Voice”.
2. Click “Done.”
3. The website should appear as shown below in your favorites bar.





Chrome

Logging In

1. For cruisers or department-wide desktop computers, it's best to create a new general account rather than logging into your personal one. Use the admin panel to create one or email amit@bluevoice.io for assistance.

Examples:

- a. cruiser1@department.gov
- b. staffcomputer@department.gov

2. The initial password will always be your department name followed by "123!".

Examples:

- a. Brookline123!
- b. Cambridge123!

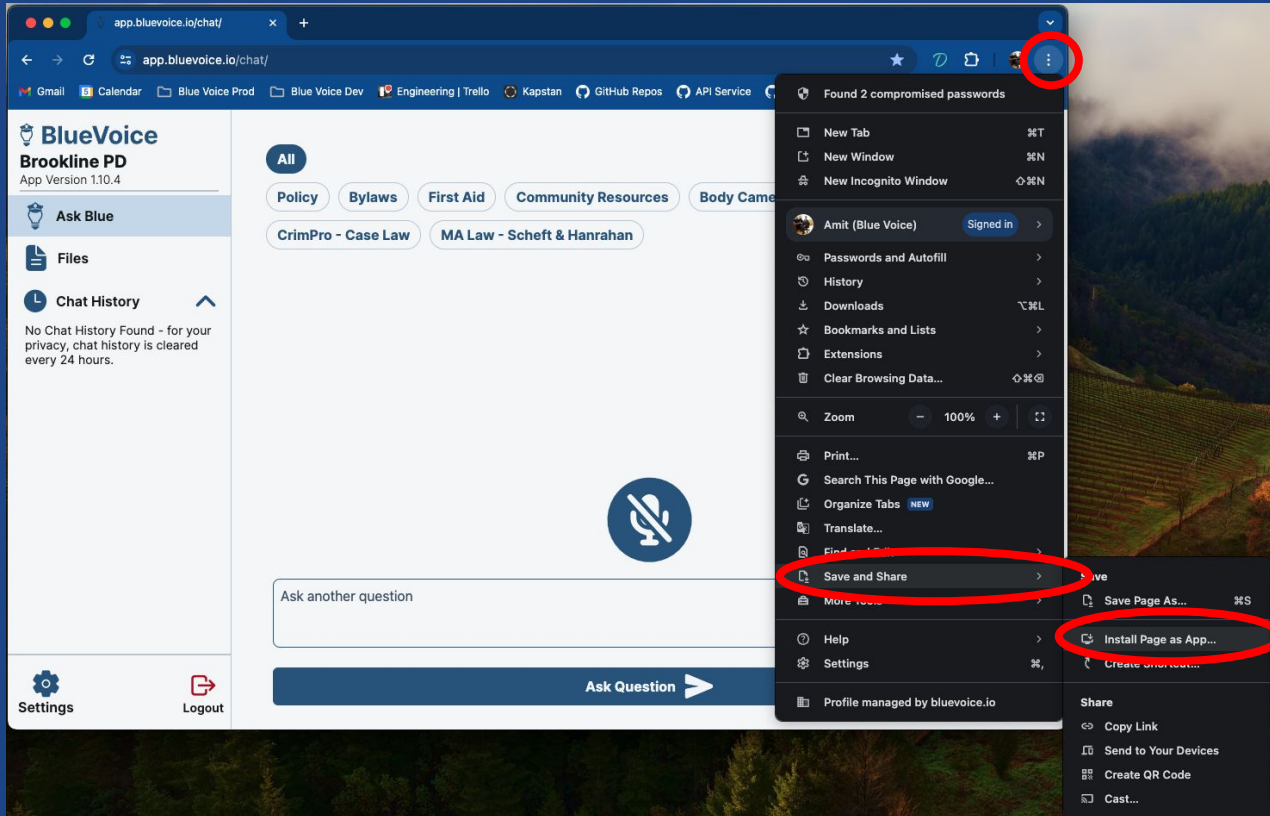
Email
Email@.com
Use your department work email

Password
Password Field

[Forgot your password? Click Here.](#)

Start Bluevoice ➔

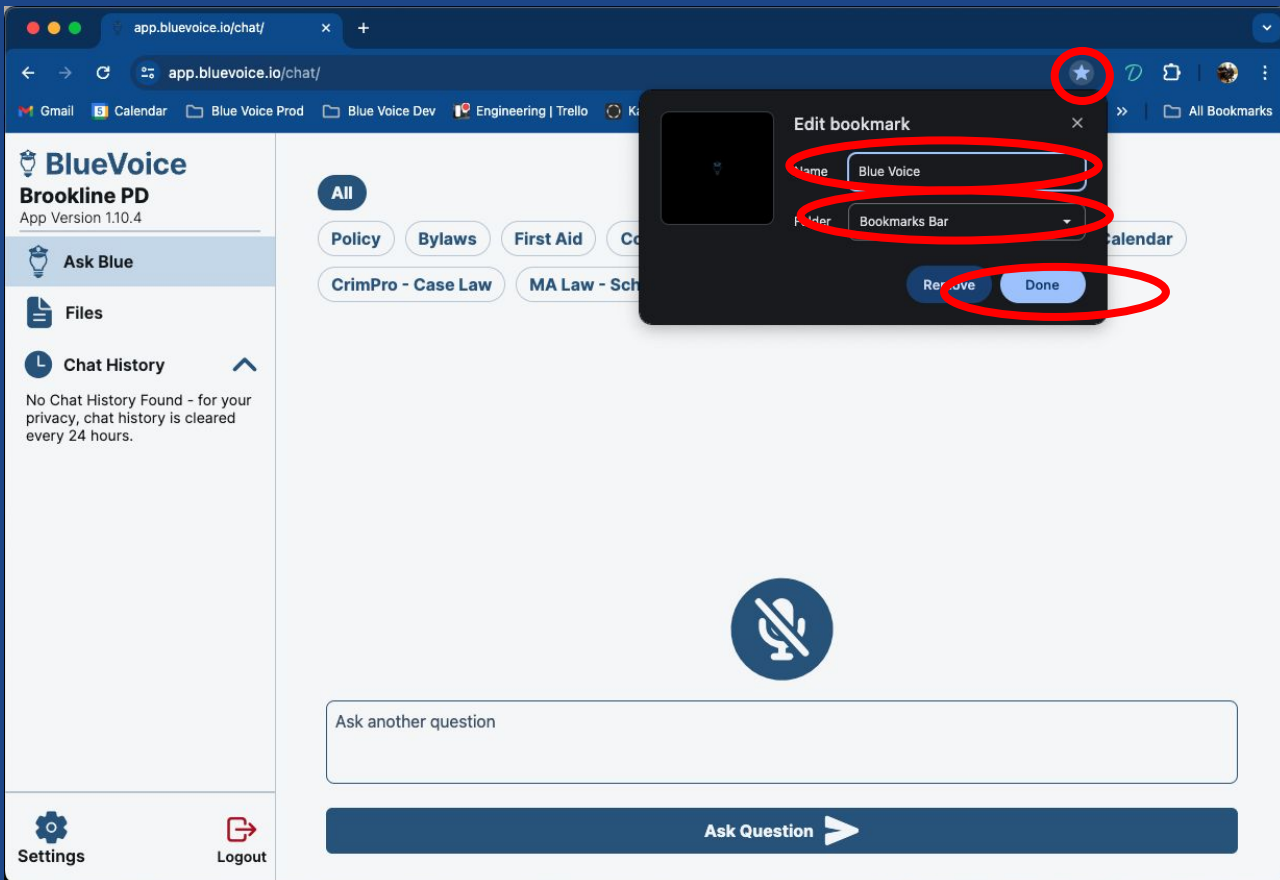
Install Page as App



1. Navigate to app.bluevoice.io and log in.
2. Tap 3 dots in upper right hand corner.
3. Hover mouse over “Save and share”.
4. Click install page as app.
5. Move the application to the Start bar at the bottom.

Save as Bookmark

1. Navigate to app.bluevoice.io and log in.
2. Press the star in the URL box.
3. Name the bookmark “Blue Voice”.
4. Select the “Bookmarks Bar” folder.
5. Press “Done”.



Troubleshooting and Information

1. If you're encountering issues, please email amit@bluevoice.io for assistance.